

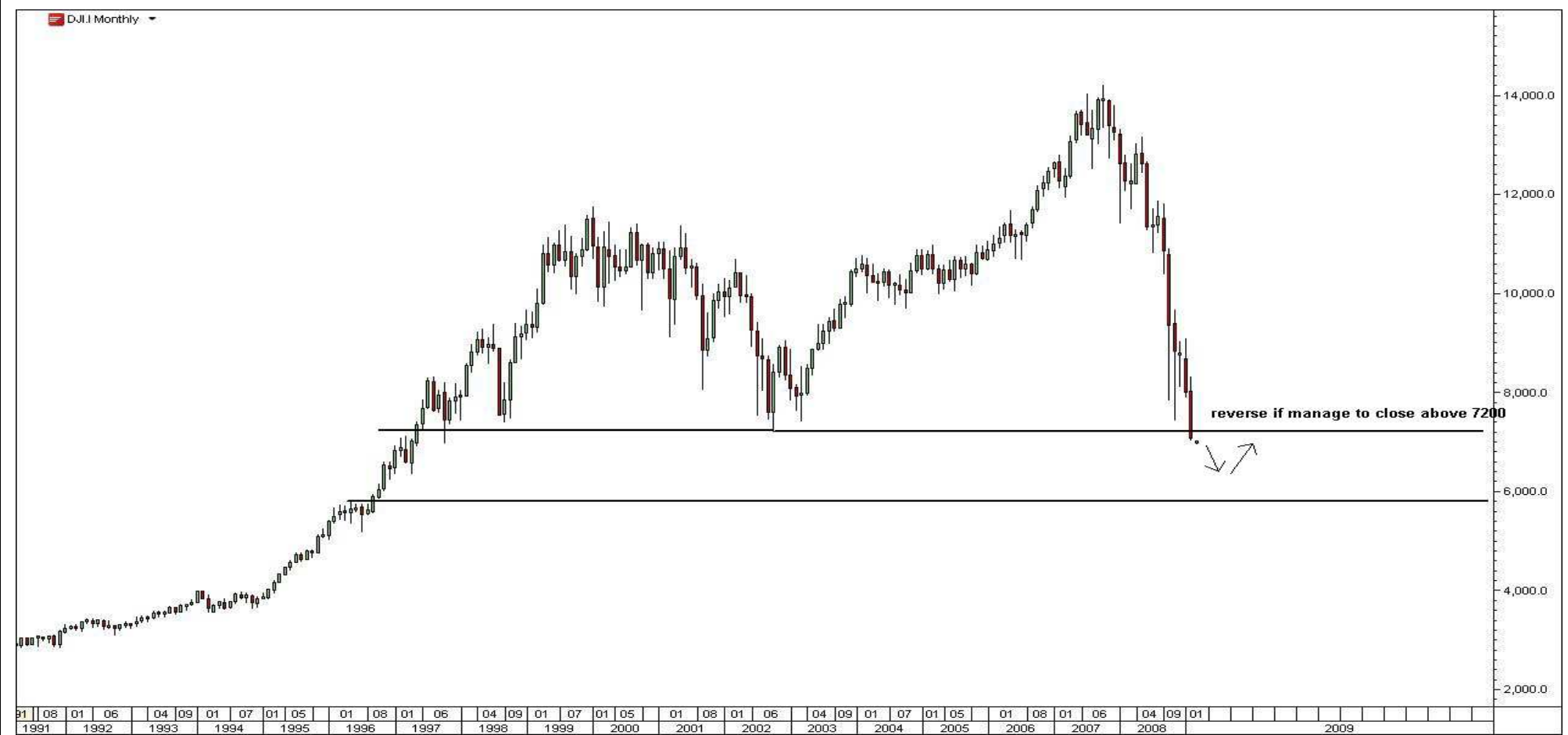
4 March 2009

Today's Calendar

| Date | News and Events | | | |
|-------|-----------------|--------------------------------|----------|---|
| | Hour | Detail | Forecast | Our opinion |
| 4-Mar | 4:30am GBP | Services PMI | 41.6 | If the news will show a higher value, it will be good for the markets (obviously if the value will be lower the market will sink) |
| | 8:15am USD | ADP Non-Farm Employment Change | -620K | If the news will show a higher value, it will be good for the markets |
| | 10:00am USD | ISM Non-Manufacturing PMI | 41.2 | If the news will show a higher value, it will be good for the markets |
| | | | | |
| | | | | |



Dow - monthly



Today's Description

We saw the 7200 – 7400 zone retest. Dow closed under so we could see more declines from here. Reverse only if breaks above 7200



Dow - weekly



Today's Description

Closed under 7100. We should see more down moves from here. Reverse only if breaks above 7200

Dow - daily



Today's Description

Dow closed under support. We should see some bottom here in 6500 – 6800 area. After that some grow to 7500 possible. Aspect for an accumulation for 1-2 days under 7000 points

Dow – 30 minutes



Pivot Points

R3: 7061

R2: 6911

R1: 6819

PP: 6762

S1: 6669

S2: 6612

S3: 6462

Today's Description

Trade signals with Stochastic (5,3,3) (for that see articles about technical analysis at <http://www.futureanalyzer.com/solutions.php>) following our scenario for today...

S&P 500 e-mini – 30 minutes





Today's detailed description

| <u>Supports and Resistances</u> | <u>Time Turns</u> |
|--|--------------------------|
| 6900 | 11:00 |
| 6800 | 12:25 |
| 6700 | 14:00 |
| 6650 | |
| 6550 | |

| <u>Commentary</u> |
|--|
| It should be a short day today... Sell highs |