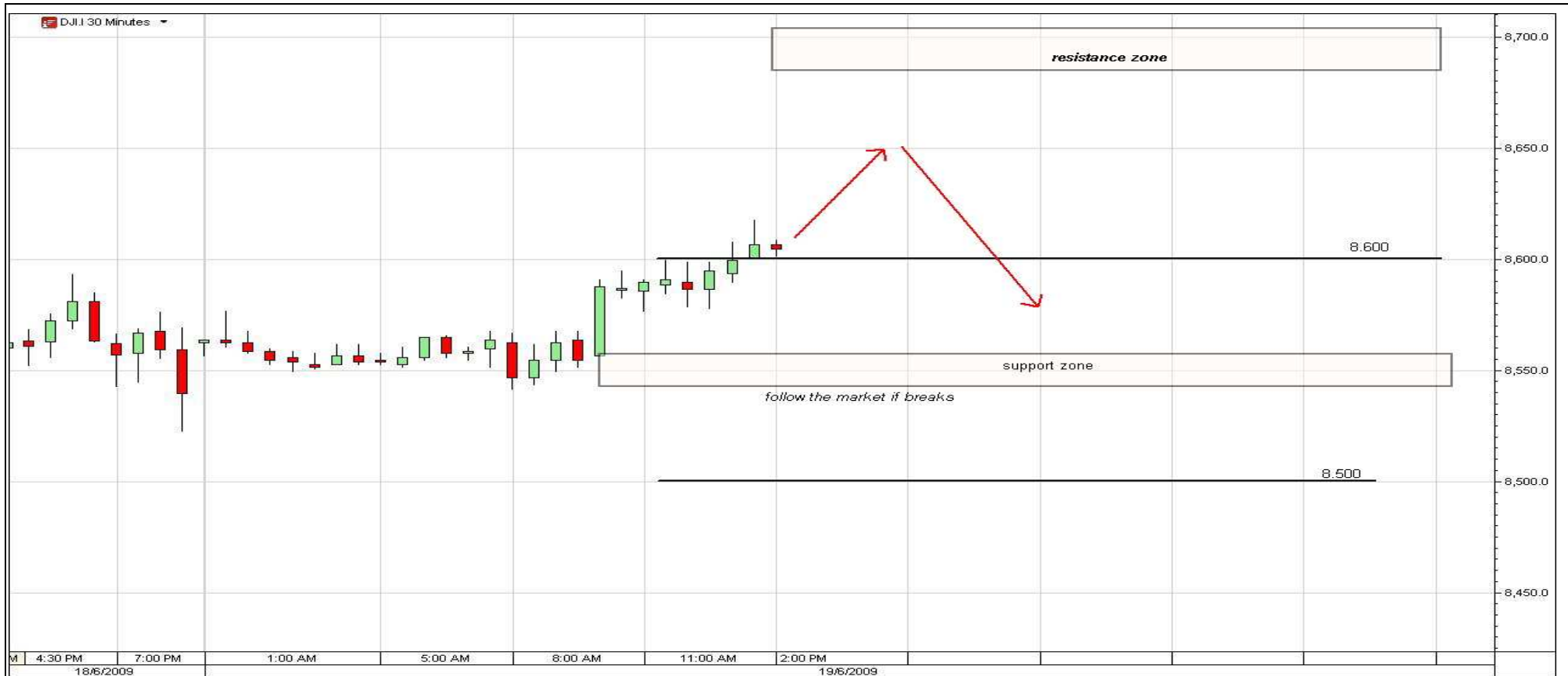


Dow Jones Industrial Average (DJI)

Time Frame: 30 minutes



Today's Description

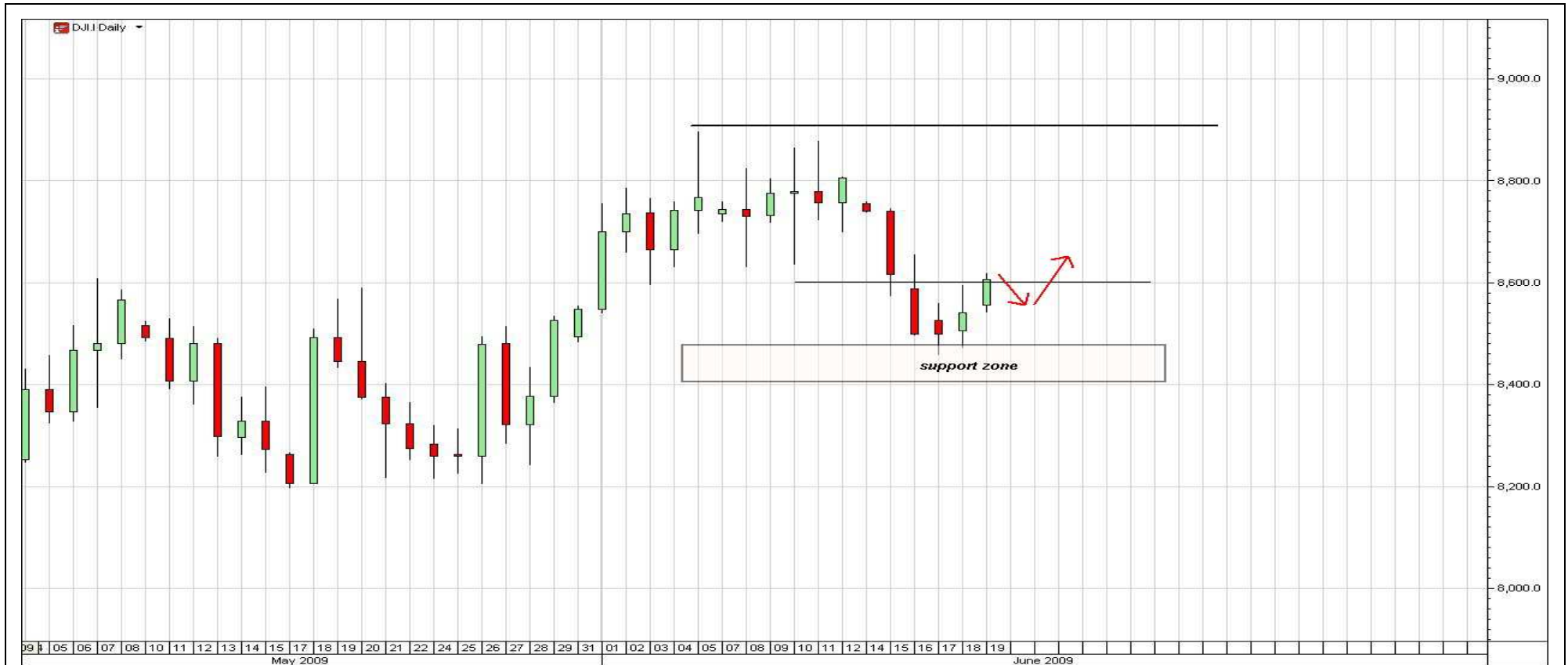
with red arrows is presented our prediction for today!

Today we have a little difficult day to read... Main direction for this day should be short. Some upward moves at the beginning and then a down move to 8.550 and then possible to 8.500. This should be the main scenario. But try short only under 8.600 and be careful. Around 12-13 o'clock New York it's possible to see some upward moves. If this will happen do not consider short any more (look for 8.700).



Dow Jones Industrial Average (DJI)

Time Frame: DAY



Today's Description

with red arrows is presented our prediction for next days!

We saw all the move down from 8.800 to 8.450 exactly like we said. We hope you got a big slice from this move.

From now we should see a little resistance near 8.400-8.430. Dow should try a recovery to 8600 and then a little down again to supports. Next week will see. Follow the market with short trades again if manages to break 8.400