



Dow - weekly



Today's Description

We have a very nice triangle. The price can go up and down, from resistance to support, and arrive to 8.000 points in February.

Dow - daily

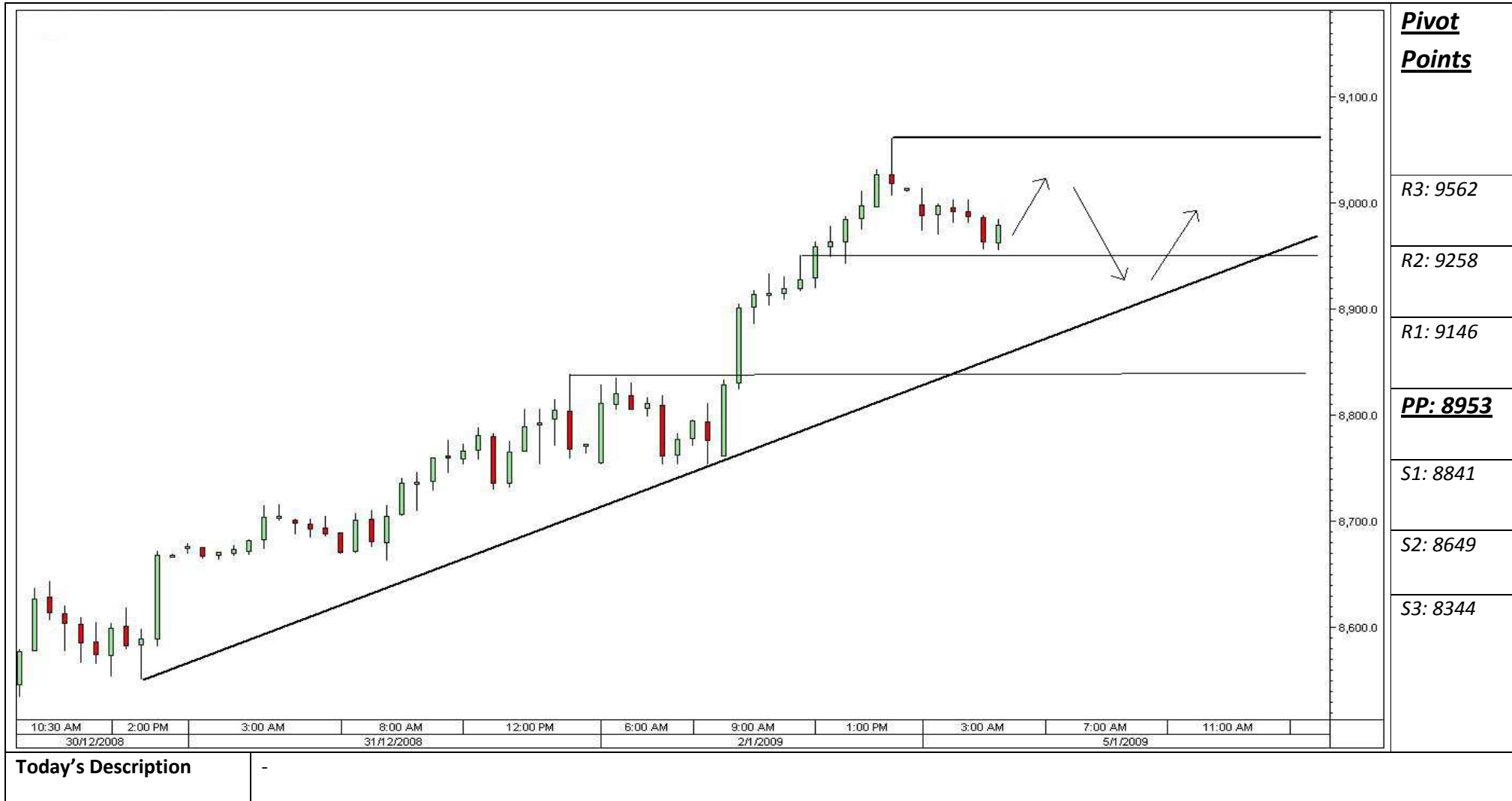


Today's Description

We aspect a top here at 8.950 – 9.050 and a decline after.

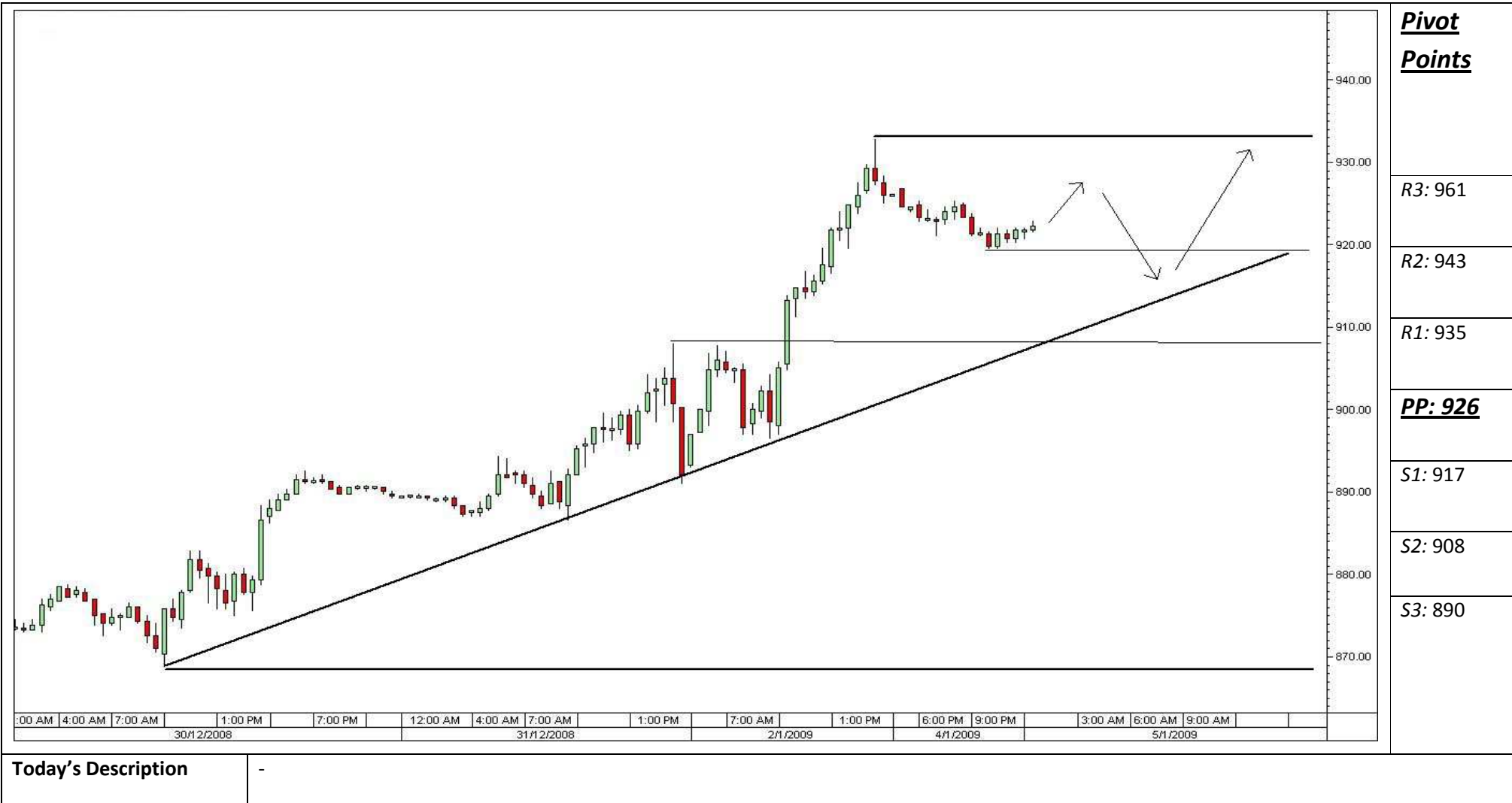


Dow – 30 minutes





S&P 500 e-mini – 30 minutes



Today's detailed description

<u>Supports and Resistances</u>	<u>Time Turns</u>
9160	10:45 – TURN SELL
8950-9050 – very important resistance zone	11:10 - TURN
8900	12:30 – TURN BUY
8850 – important support for today	13:12 – TURN SELL
	15:03 - TURN

Commentary

We aspect a quiet market for today, with a support at 8850 and a top around 8950 – 9000 points.