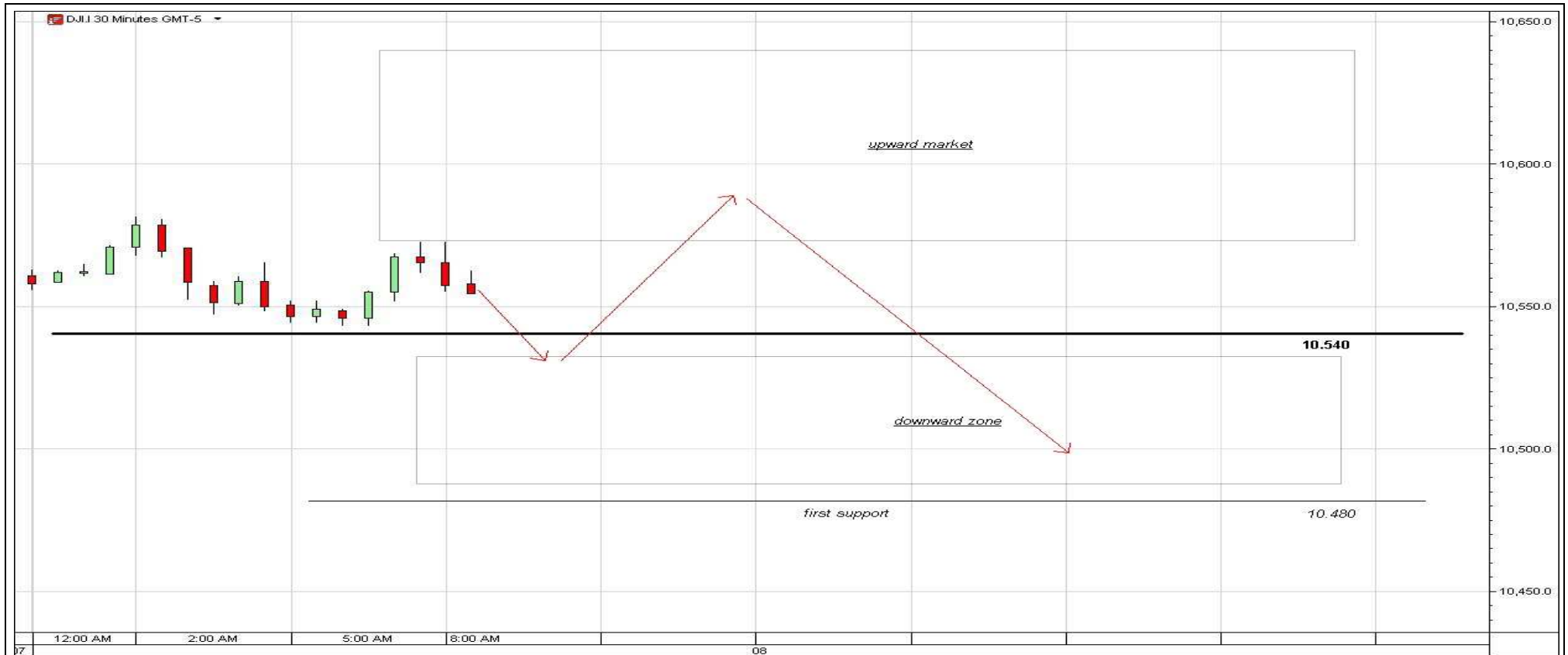


Dow Jones Industrial Average (DJI)

Time Frame: 30 minutes



Today's Description

With red arrows is presented our prediction for today!

During today's live session after some oscillation above 10.540 (possible to 10.600) we can see significant downward moves in the second part of the session.

A strong pivot line for today is at 10.540. Above it you can consider some quick long trades, but under it only shorts should be open.



Dow Jones Industrial Average (DJI)

Time Frame: DAY



Today's Description

With red arrows is presented our prediction for next days!

Exactly like we expected, Dow managed to touch our target from 10.540...

During next days some sort of local top should develop near 10.600 level (between 10.540 and 10.720). After that, a downward move back into our accumulation zone is to be expected.